

Winterization

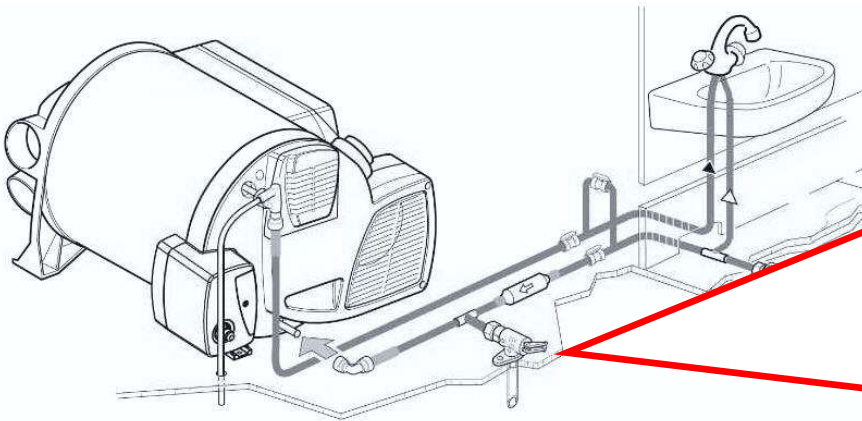
The Combi furnace does not feature a frost protection function. The water container must be drained if the RV will not be used whenever there is a risk of frost as severe damage to the plumbing components and the Combi could occur due to freezing. Damage caused by freezing or an unsuitable winterizing fluid is not covered by warranty.

To make sure that all the water drains properly from the water container, place a big enough vessel underneath the drainage socket of the pressure relief/drain valve (>2.64 gallons/10 liters).

1. Use the main switch or pump switch to switch OFF the power to the water pump assembly.
2. Turn OFF or disconnect the city water connection, if present.
3. OPEN all water release points, e.g. cold and hot water faucets, etc.
4. OPEN the drain valve by moving the lever to position C (see illustration).
5. Leave the drain valve OPEN while the Combi is winterized.

Once all the water is removed, the Combi is winterized.

A Combi that does not completely drain could be evidence of an issue with the Warm Water Connection/Aeration Valve.



Winterizing the RV with Winterizing Fluid

Winterizing the RV with a winterizing fluid is only possible with an installed bypass kit (see example illustration), which is not in the scope of supply, refer to the RV manual.

1. Drain the water container (as detailed in Winterization instructions above).
2. Turn the valves of the bypass kit according to the supplier's or RV manufacturer's guidelines.
3. Flush the water system with a suitable winterizing fluid according to the supplier's or RV manufacturer's guidelines.

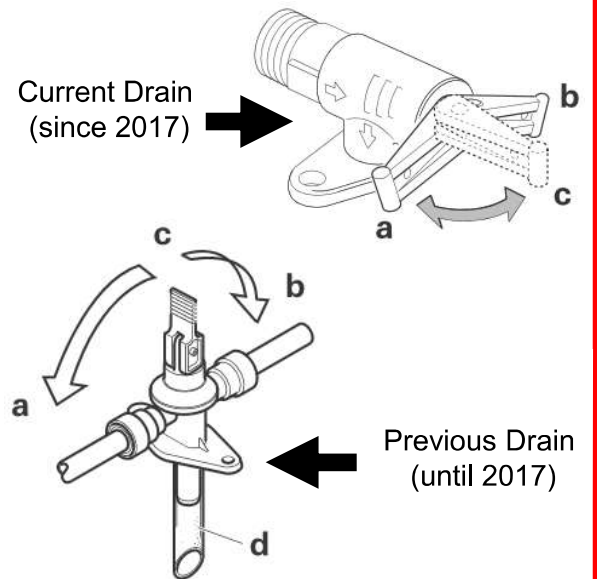
Bypass Kit Example

NOTE: The illustration to the right is an example of a bypass kit. Bypass kits are not included with Truma systems and is therefore the decision of the installer as to whether a bypass kit is installed in the RV's plumbing system, as well as how it is designed and configured. Always refer to supplier's or RV manufacturer's guidelines to determine proper operation of bypass kit.

To isolate the Truma Combi from the RV plumbing system via Bypass Kit Example once drained:

- e. CLOSE cold water inlet valve by turning valve perpendicular to piping direction.
- f. CLOSE hot water outlet valve by turning valve perpendicular to piping direction.
- g. Turn bypass valve to OPEN position.

Drain Valve



Bypass Kit Example

